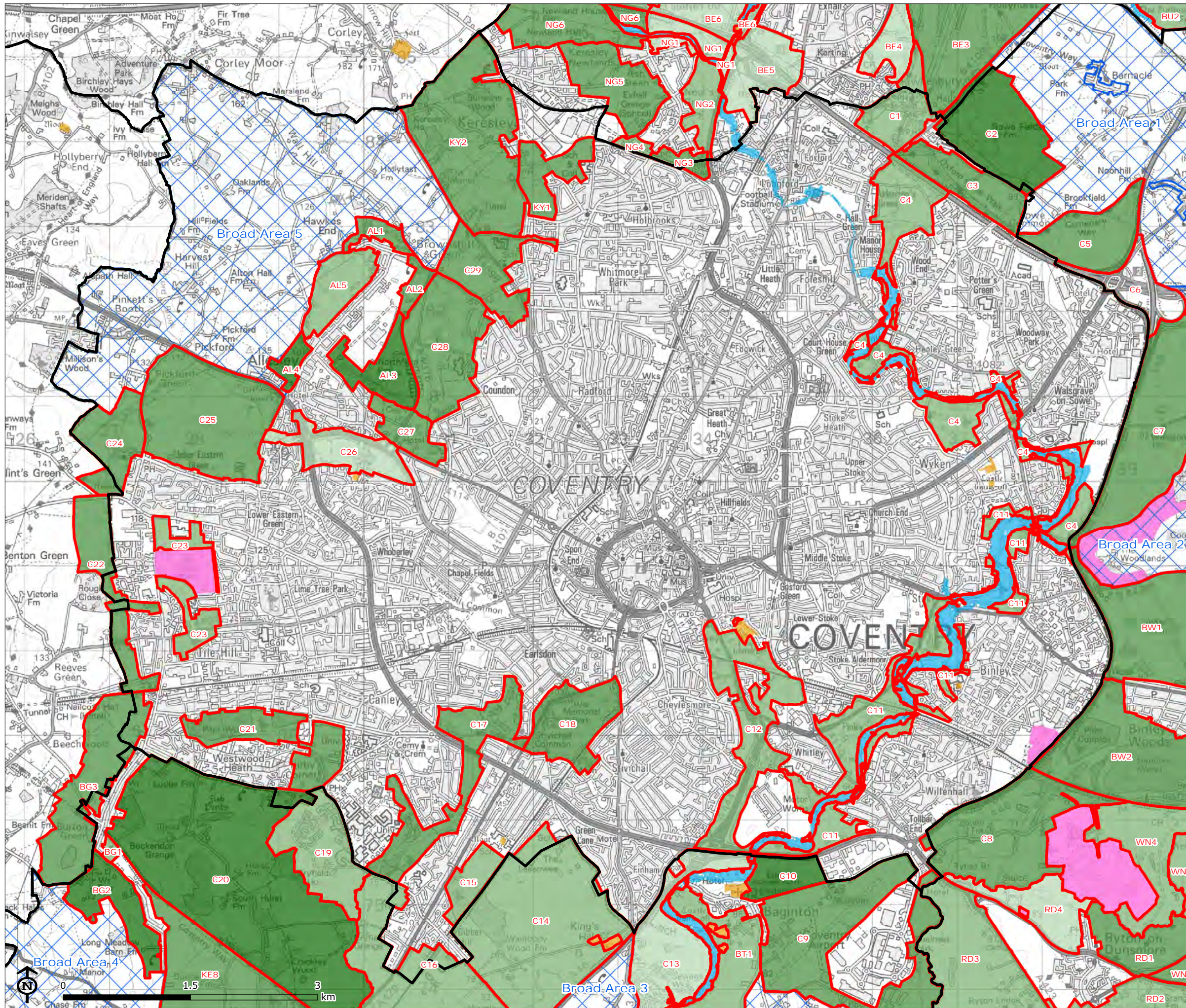


Purpose 3 – Parcels' relative contribution to assisting in safeguarding the countryside from encroachment



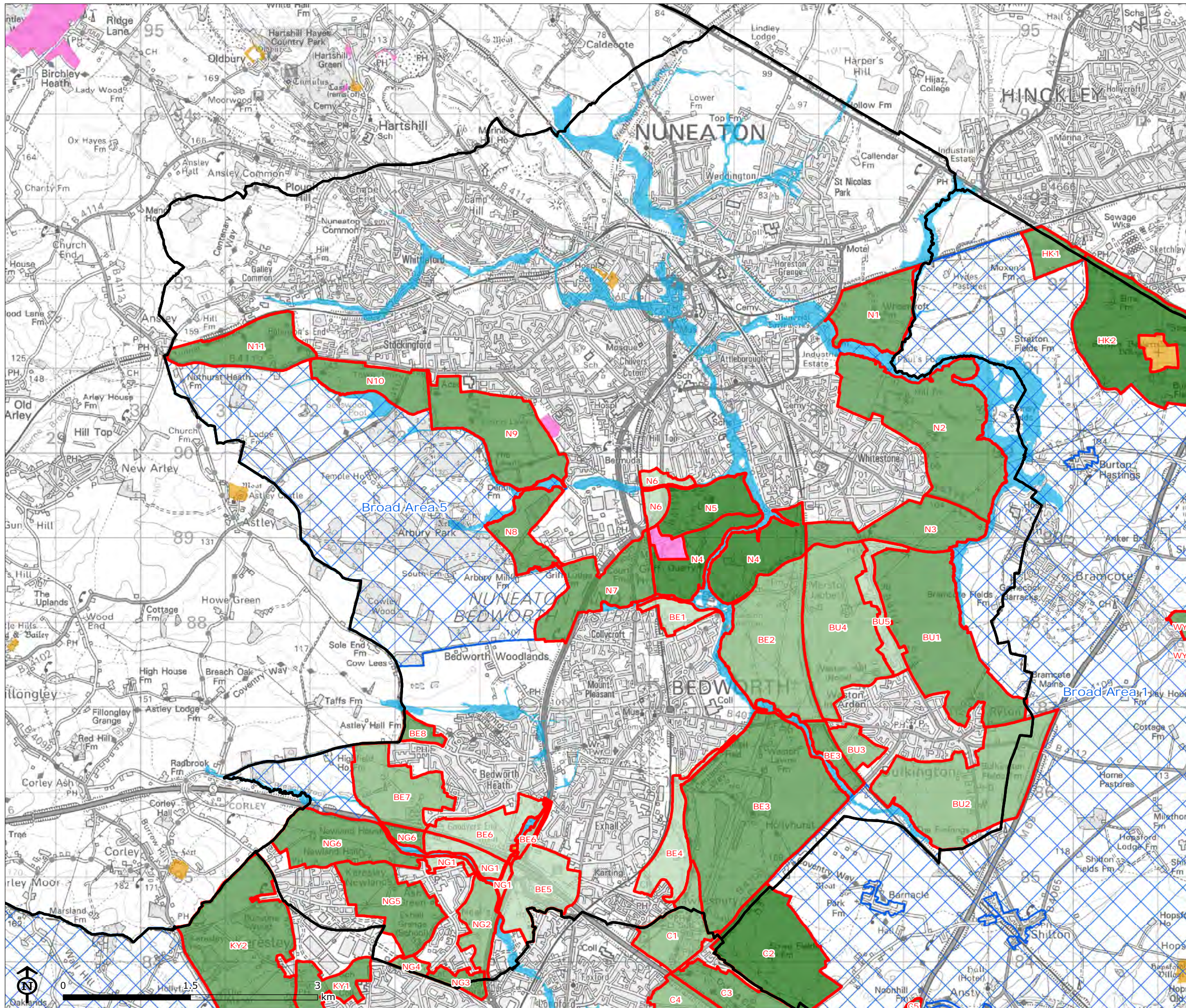
Joint Green Belt Study

Coventry Parcels' Performance Against Green Belt Purpose 3 - To Assist in Safeguarding the Countryside from Encroachment

- District Boundary
- Broad Area
- Parcel Performance**
- 4
- 3
- 2
- 1
- 0
- SSSI
- Scheduled Monument
- Flood Zone 3b

Map Scale @ A3: 1:44,000





Joint Green Belt Study

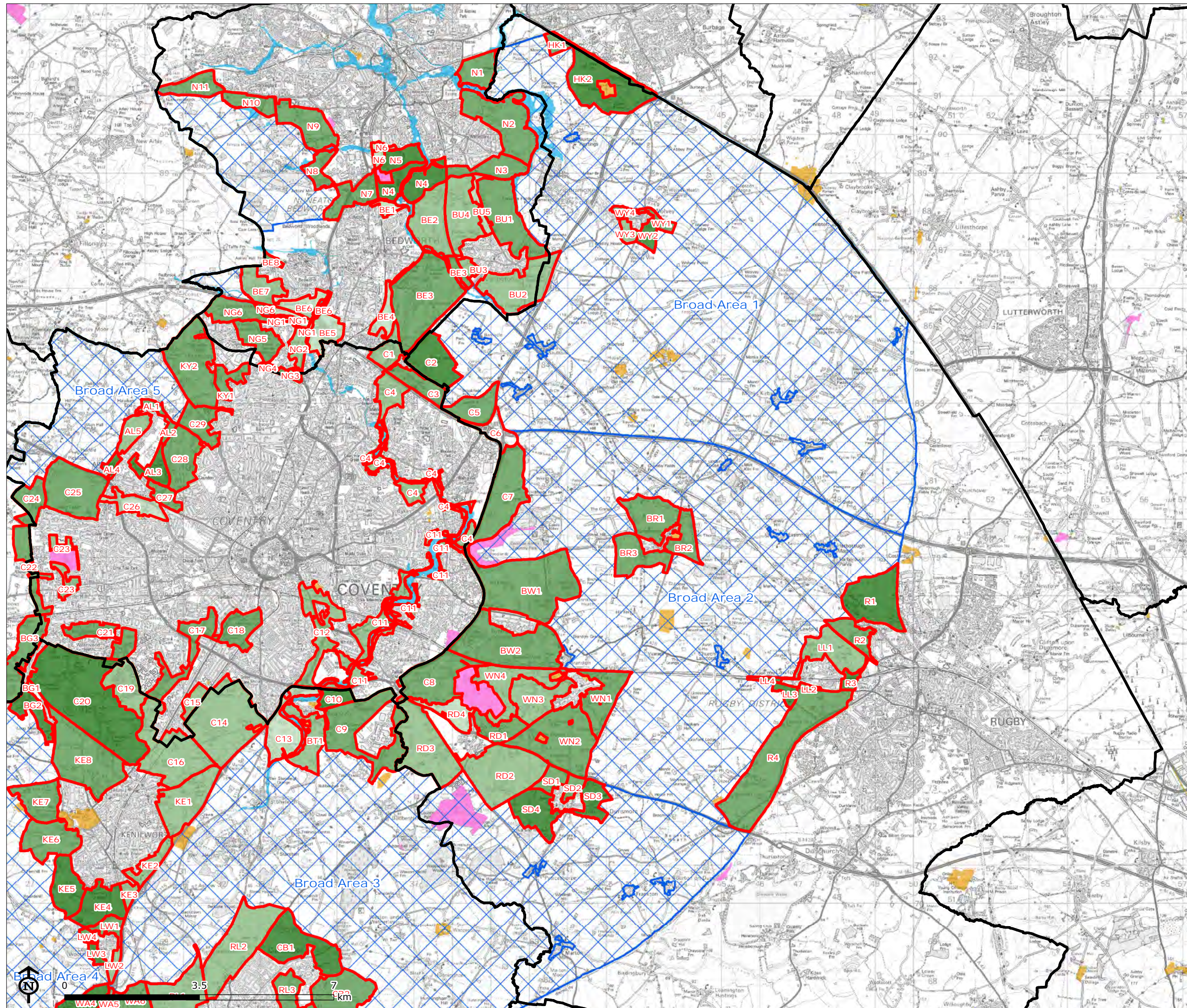
Nuneaton and Bedworth
Parcels' Performance Against
Green Belt Purpose 3 - To
Assist in Safeguarding the
Countryside from
Encroachment

- District Boundary
- Broad Area
- Parcel Performance
 - 4
 - 3
 - 2
 - 1
 - 0
- SSSI
- Scheduled Monument
- Flood Zone 3b

Map Scale @ A3: 1:44,000



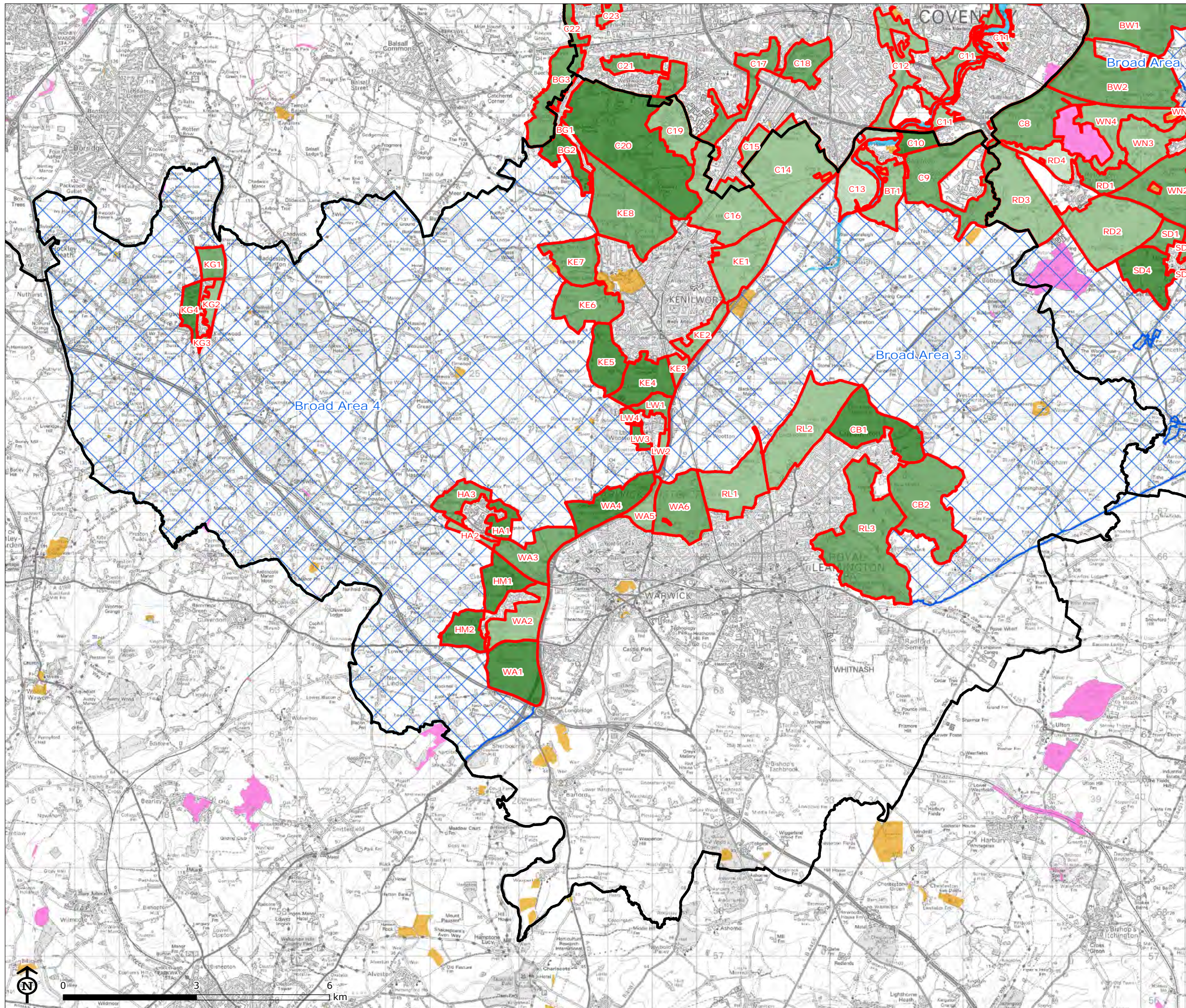
Rugby Parcels' Performance Against Green Belt Purpose 3 - To Assist in Safeguarding the Countryside from Encroachment



- District Boundary
- Broad Area
- Parcel Performance
 - 4
 - 3
 - 2
 - 1
 - 0
- SSSI
- Scheduled Monument
- Flood Zone 3b

Map Scale @ A3: 1:97,000





Joint Green Belt Study

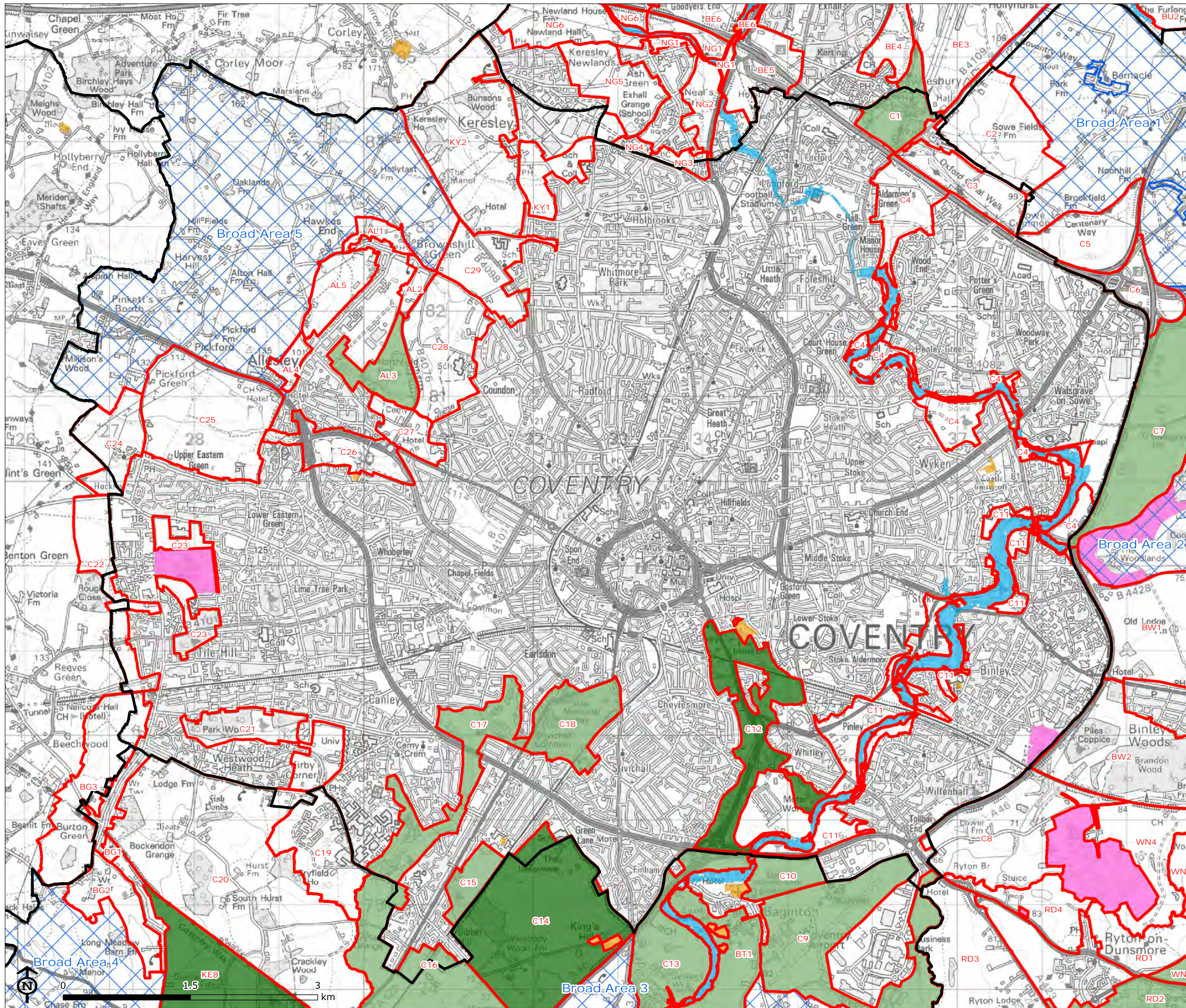
Warwick Parcels' Performance Against Green Belt Purpose 3 - To Assist in Safeguarding the Countryside from Encroachment

- District Boundary
- Broad Area
- Parcel Performance**
- 4
- 3
- 2
- 1
- 0
- SSSI
- Scheduled Monument
- Flood Zone 3b

Map Scale @ A3: 1:84,000











Purpose 4 – Parcels relative contribution to preserving the setting and special character of historic towns



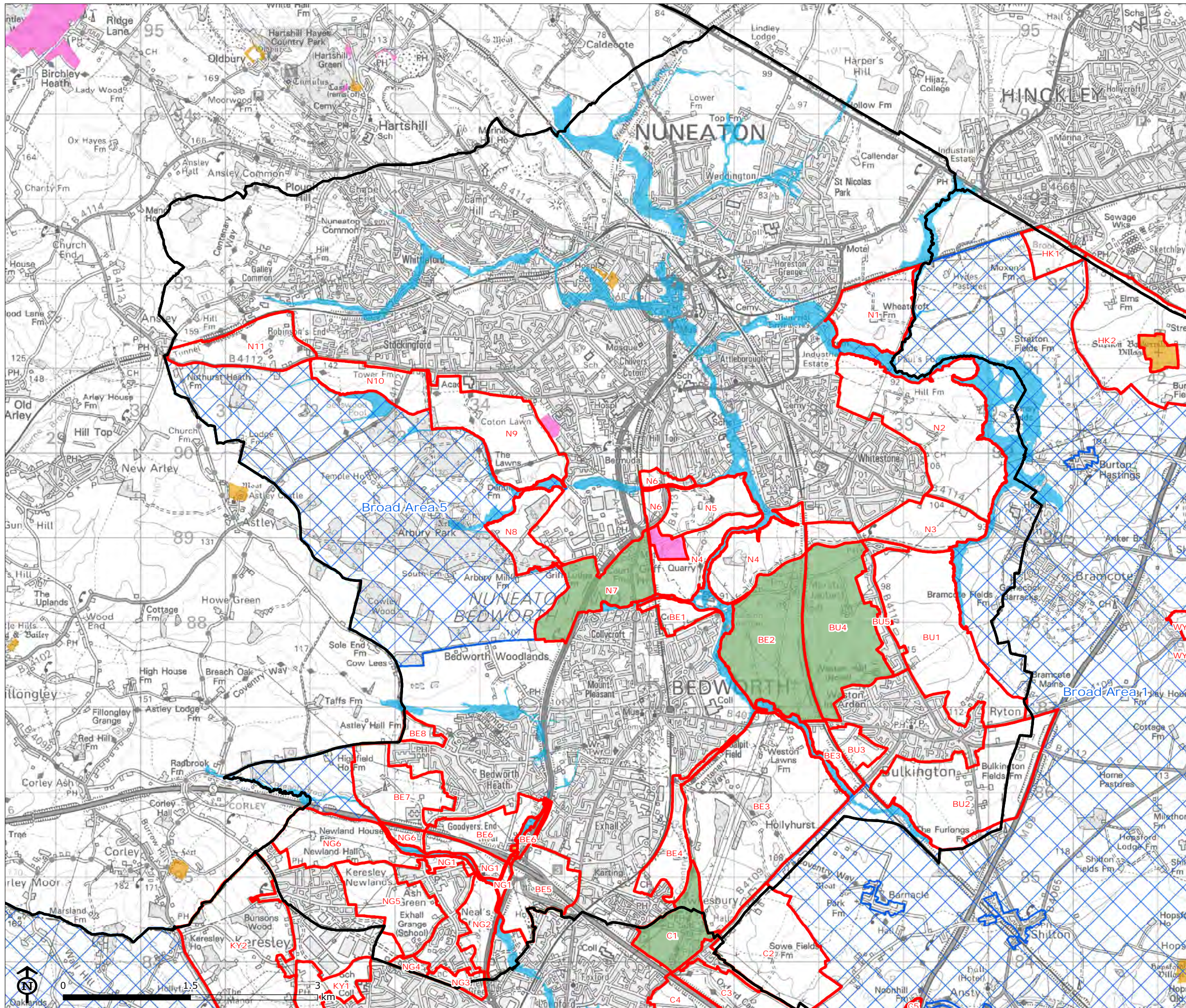
Joint Green Belt Study

Coventry Parcels' Performance Against Green Belt Purpose 4 - To Preserve the Setting and Special Character of Historic Towns

-  District Boundary
-  Broad Area
- Parcel Performance
-  4
-  2
-  0
-  SSSI
-  Scheduled Monument
-  Flood Zone 3b









Map Scale @ A3: 1:44,000





Joint Green Belt Study









Nuneaton and Bedworth
Parcels' Performance Against
Green Belt Purpose 4 - To
Preserve the Setting and
Special Character of Historic
Towns

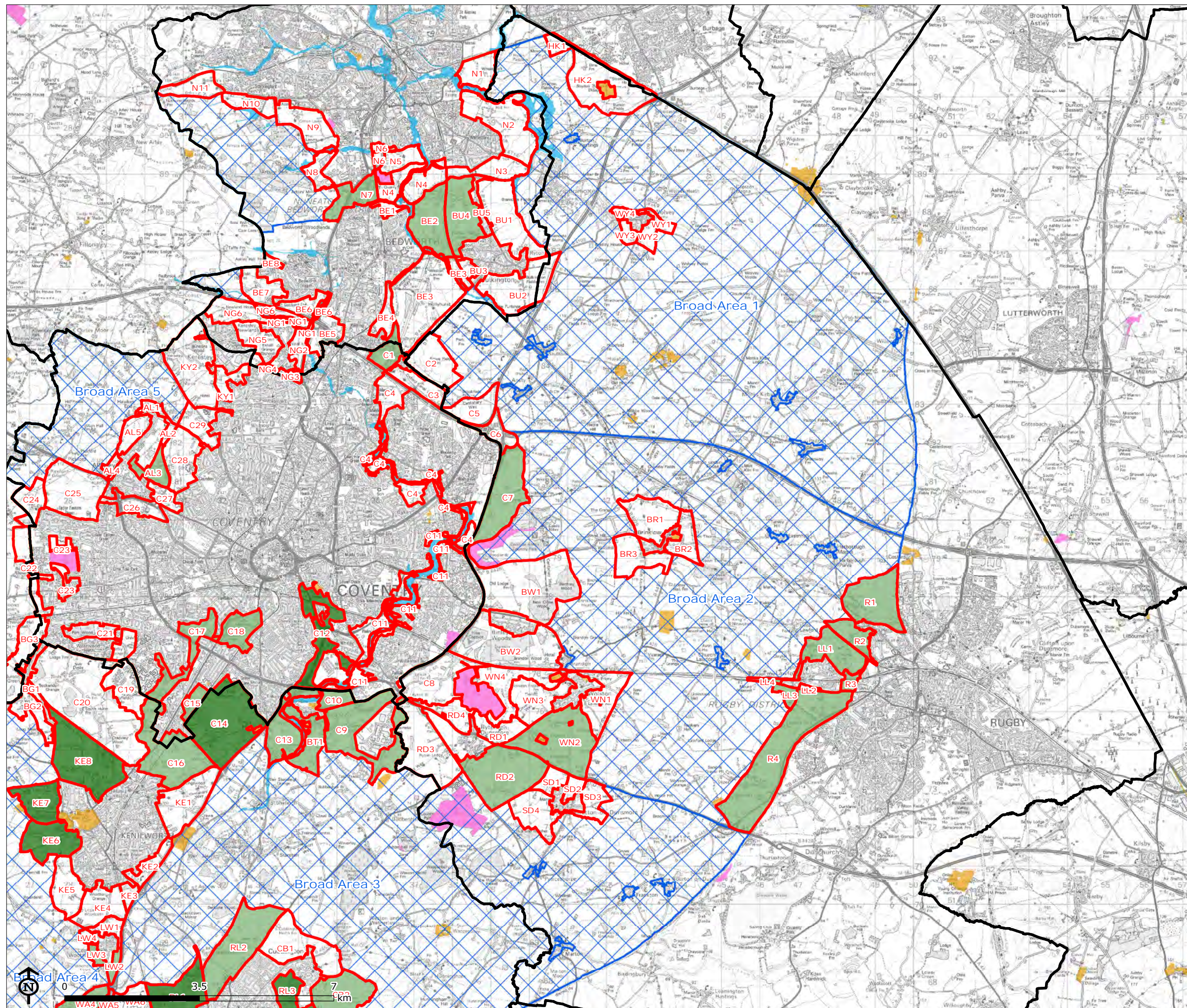
-  District Boundary
-  Broad Area
- Parcel Performance
 -  4
 -  2
 -  0
-  SSSI
-  Scheduled Monument
-  Flood Zone 3b

Map Scale @ A3: 1:44,000



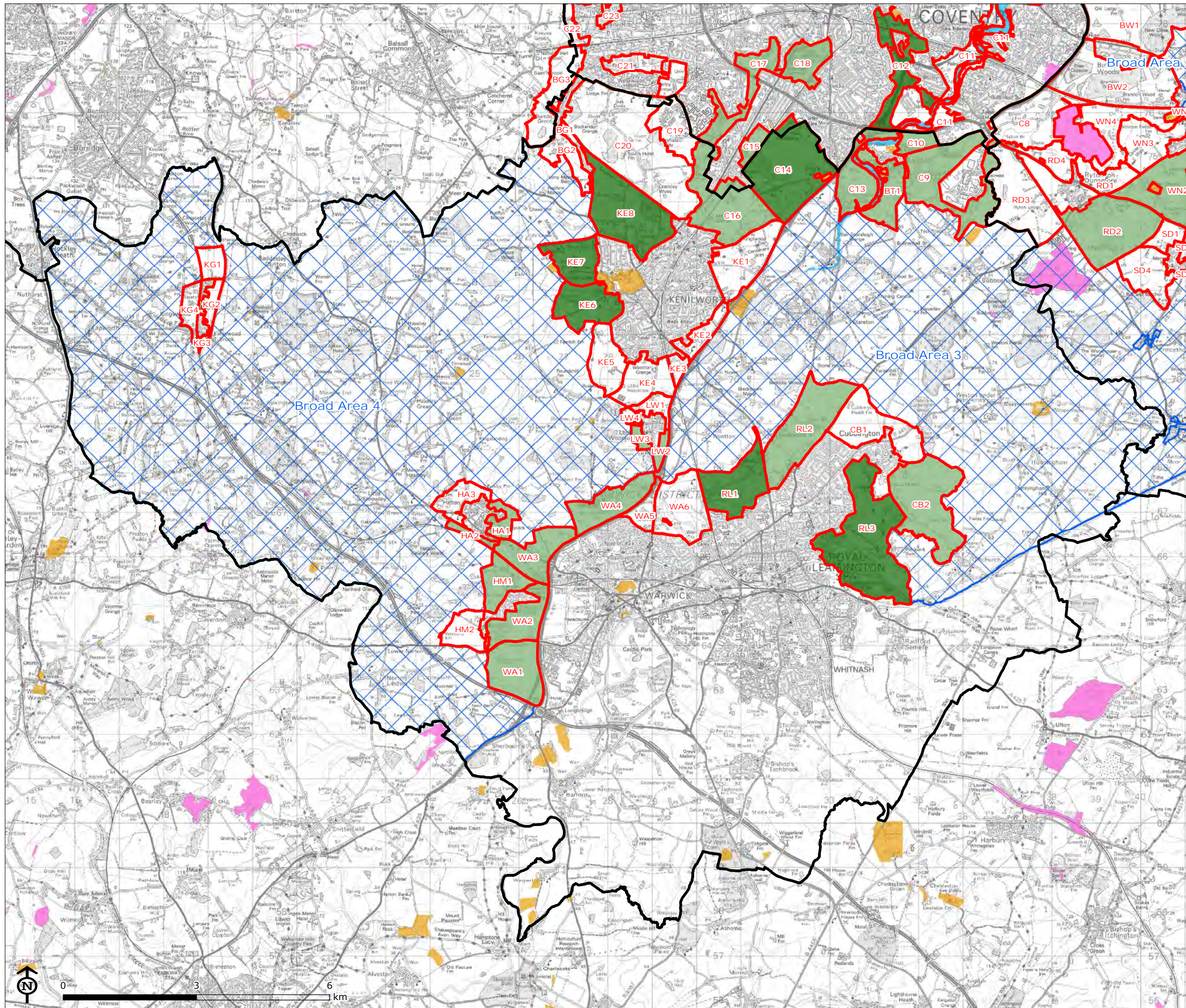
Rugby Parcels' Performance Against Green Belt Purpose 4 - To Preserve the Setting and Special Character of Historic Towns

-  District Boundary
-  Broad Area
- Parcel Performance
-  4
-  2
-  0
-  SSSI
-  Scheduled Monument
-  Flood Zone 3b



Map Scale @ A3: 1:97,000





Joint Green Belt Study

Warwick Parcels' Performance Against Green Belt Purpose 4 - To Preserve the Setting and Special Character of Historic Towns

- District Boundary
- Broad Area
- Parcel Performance**
- 4
- 2
- 0
- SSSI
- Scheduled Monument
- Flood Zone 3b

Map Scale @ A3: 1:84,000

