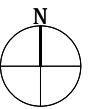
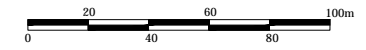





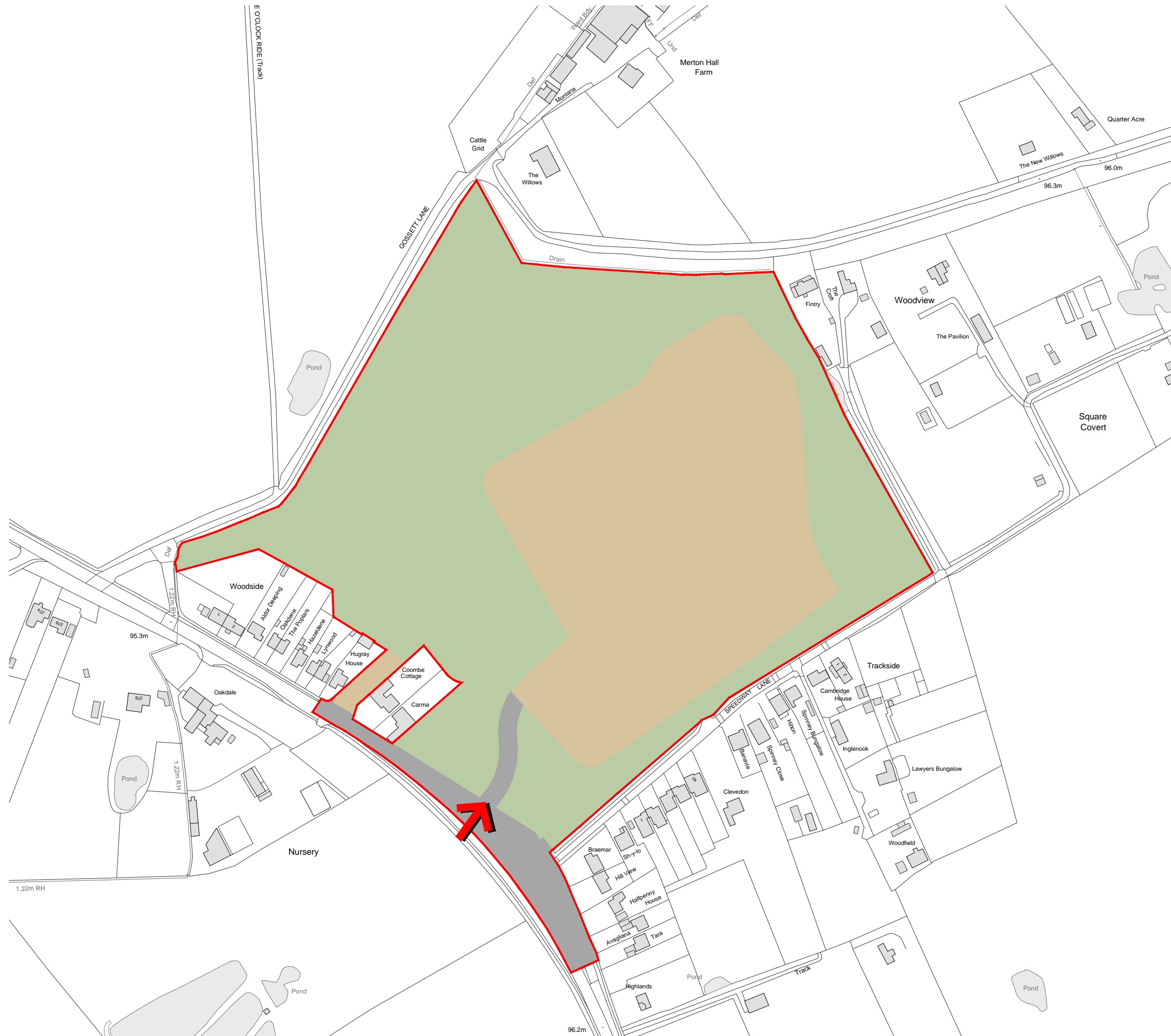


The scaling of this drawing cannot be assured

Revision	Date	Drn	Ckd
B Site boundary updated	14.12.17	KU	EB



-  Site boundary 10.86Ha
-  Residential (inc. incidental green space, access roads, drainage and infrastructure) 4.07Ha
-  Infrastructure (inc. access roads and land within highways ownership) 0.55Ha
-  Public Open Space (to inc. drainage, existing & proposed structural planting, access roads, pedestrian and cycle routes and associated informal and formal play / recreation facilities) 6.24Ha
-  Vehicular Access Point



Project
**Brandon Stadium
Coventry**

Drawing Title
**Parameter Plan :
Land Uses**

Date	Scale	Drawn by	Check by
02.10.17	1:2500 @ A3	PT	EB
Project No	Drawing No	Revision	
27510	9600	B	



Planning • Master Planning & Urban Design • Architecture •
Landscape Planning & Design • Environmental Planning • Graphic
Communication • Public Engagement • Development Economics

bartonwillmore.co.uk



Offices at Birmingham Bristol Cambridge Cardiff Ebbsfleet Edinburgh
Leeds London Manchester Newcastle Reading Southampton