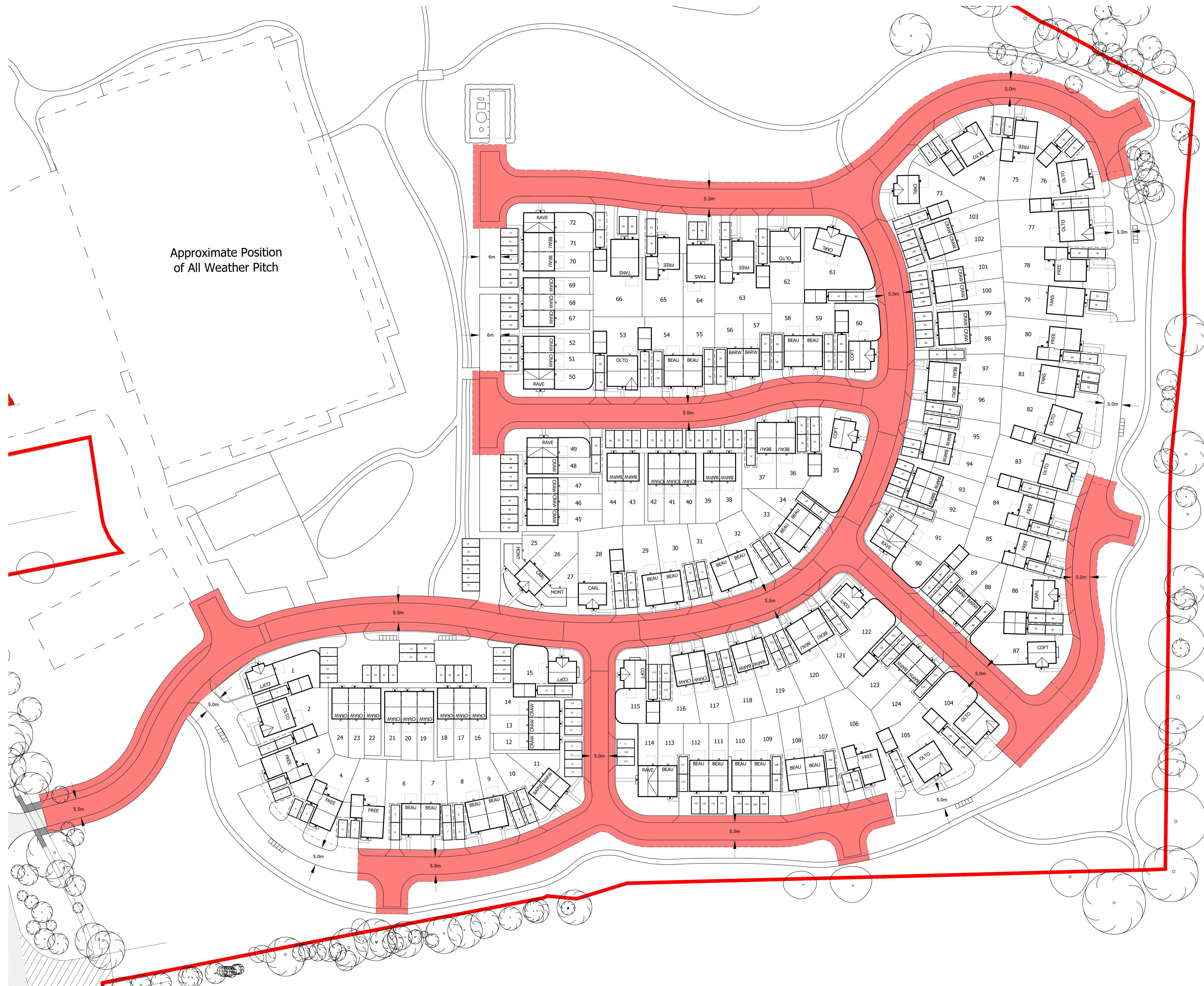


Approximate Position  
of All Weather Pitch



Housetype	No.	Storey	Beds	Parking Spaces Per Dwelling	Sqft	Total Sqft
-----------	-----	--------	------	-----------------------------	------	------------

Open Market						
Montague	2	2	2	2	755	1,510
Crawford	18	2	2	2	769	13,842
Barwick	18	2.5	3	2	863	15,534
Beaufort	23	2	3	2	910	20,930
Ravenhurst	1	2	3	2/3	910	910
Carlton	5	2	3	2/3	1000	5,000
Cofton	7	2	3	3	1011	7,077
Freemont	11	2	4	3	1270	13,970
Tansley	4	2	4	3	1392	5,568
Olton	10	2	4	3	1519	15,190

<b>Sub Total</b>	<b>99</b>					<b>99,531</b>
------------------	-----------	--	--	--	--	---------------

Affordable (Rent)						
Crawford	7	2	2	2	769	5,383
Beaufort	4	2	3	2	910	3,640
Ravenhurst	3	2	3	2/3	910	2,730

Affordable (SO)						
Crawford	7	2	2	2	769	5,383
Beaufort	3	2	3	2	910	2,730
Ravenhurst	1	2	3	2/3	910	910

<b>Sub Total</b>	<b>25</b>					<b>20,776</b>
------------------	-----------	--	--	--	--	---------------

<b>Grand Total:</b>	<b>124</b>			<b>290 Spaces</b>		<b>120,307</b>
---------------------	------------	--	--	-------------------	--	----------------

**KEY**  
 Site Boundary  
 Adoptable Area

Rev	Amendments	Date
A	Selected House Type Canopies Amended. Paving increased & Ownership Boundaries set back to allow for Vision Splays.	15.09.21
B	All Weather Pitch and associated elements moved 10m from edge of existing woodland. Wider landscaping updated.	20.12.21

**Client**  
Brandon Estates Ltd

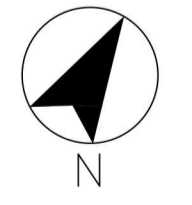
**Project**  
Brandon Stadium, Speedway Lane

**Drawing**  
Highways Adoptability Plan

**Date** June 2021  
**Purpose** Planning

**Scale** 1:500  
**Drawing Size** @ A1

**Project No.** 343A08  
**Drawing No.** 103  
**Revision** B



This drawing and design are © Copyright Malcolm Payne Group Limited. No reproduction or alteration is permitted. All written/scaled dimensions & floor areas are subject to verification by the Contractors on site.

**Malcolm Payne Group**

**Malcolm Payne Group Limited**  
 174 Holiday Street, Birmingham, B1 1TJ  
 Telephone: +44(0)121 643 3159  
 info@malcolmpaynegroup.co.uk  
 www.malcolmpaynegroup.co.uk  
 Architecture | Design | Conservation